

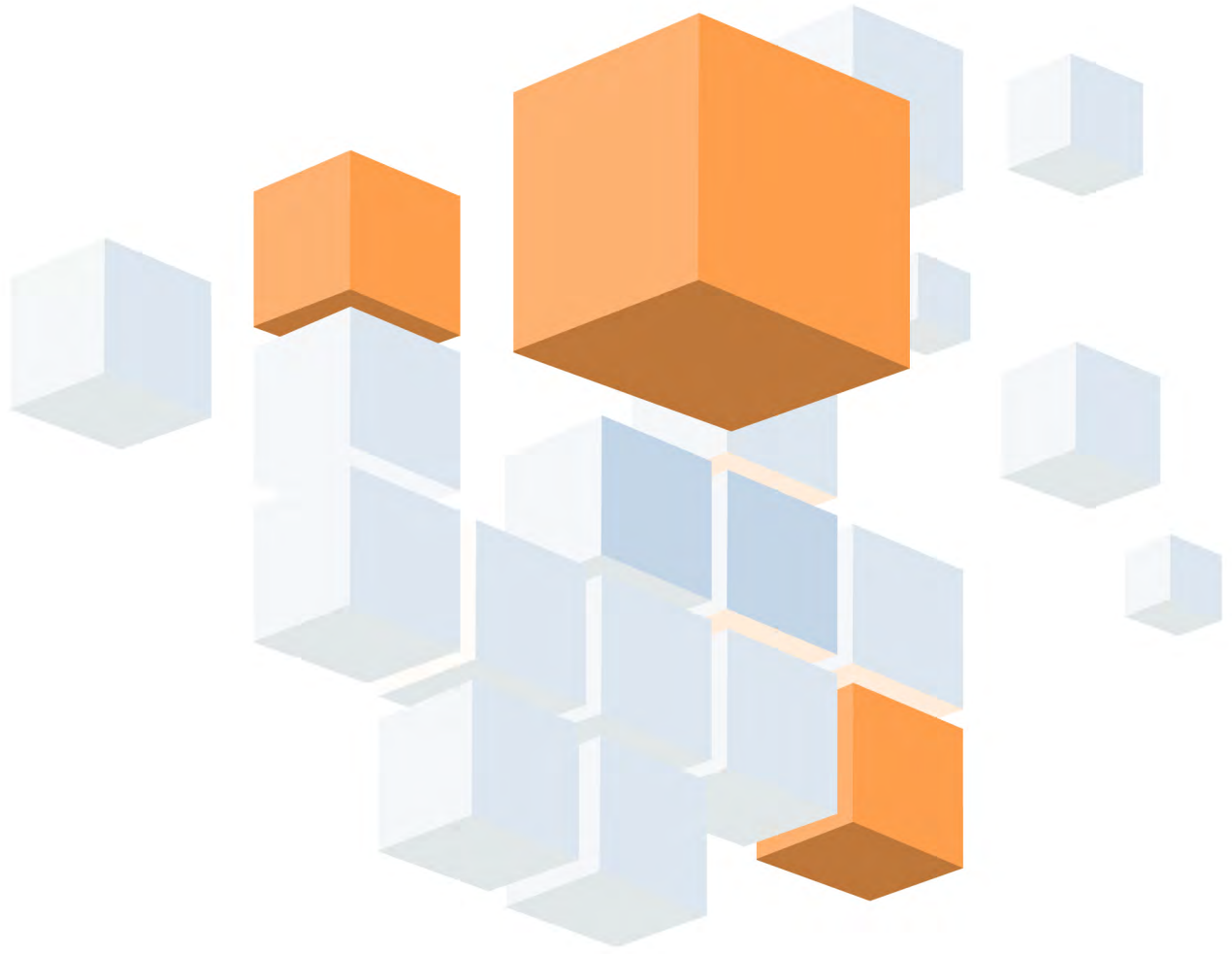


Test Catalog



Test Catalog	1
Personality	3
Diversity and values	6
Leadership	9
Interest and motivation	11
Office technology	14
Cognitive and learning	17
Situational Judgment	24
Professional	24
Administrative	26
Sales and Customer Service	31
Trade	36
Management	38
Occupational health and safety	44
Languages and communication	46





Personality




04

Emo

ID-Emotional Intelligence

The ID-Emotional Intelligence (Emo) is a personality test that first identifies your preferred style from among 16 main personality types and then describes the impact of this style in various contexts. It provides information on how you manage your emotions and your interactions with others. It is therefore a very complete portrait that will help you to better situate yourself in relation to your style and preferences.

 Target audience All levels of positions in an organization. Intended for an adult population in a development context.	 Administration 169 Questions True or False	 Correction time Snapshot
 Time required 30 minutes	 Standard report English French	
 Languages available French English		

01

Tac

ID-Personality

The ID-Personality (Tac), *previously Work Approach and Behaviour Test (WABT)*, is a personality inventory that measures normal personality at work in a selection context. It is designed to evaluate critical approaches and behaviours in daily work situations, thus providing an accurate profile of the candidate's personal characteristics.

 Target audience All levels in an organization. Intended for an adult population in a staffing context.	 Administration Tac-B : 150 Questions Multiple Choice Tac : 300 Questions True or False	 Correction time Snapshot
 Time required Tac-B : 45 minutes Tac : 1 hour and 15 minutes	 Competency Report English French Management Report : English French Spanish	Report with quotients English French Psychometric Report English French
 Languages available French English Spanish		

03

Etd

ID-Personality in School

The ID-Personality in School (Etd), *previously Work and Study Approach and Behaviour Test (WSABT)*, is used to measure the candidate’s potential to undertake studies and quickly identify the best applicants. This personality inventory is designed specifically for the workplace or daily study and is validated by experts. It measures the essential approaches and behaviours of a student who must perform within a limited enrollment program.



Target audience

All students wishing to enroll in a college or university program.



Time required

Etd-B: 45 minutes
Etd: 1 hour and 15 minutes



Administration

Etd-B: 150 Questions | Multiple Choice
Etd: 300 Questions | True or False



Correction time

Snapshot



Languages available

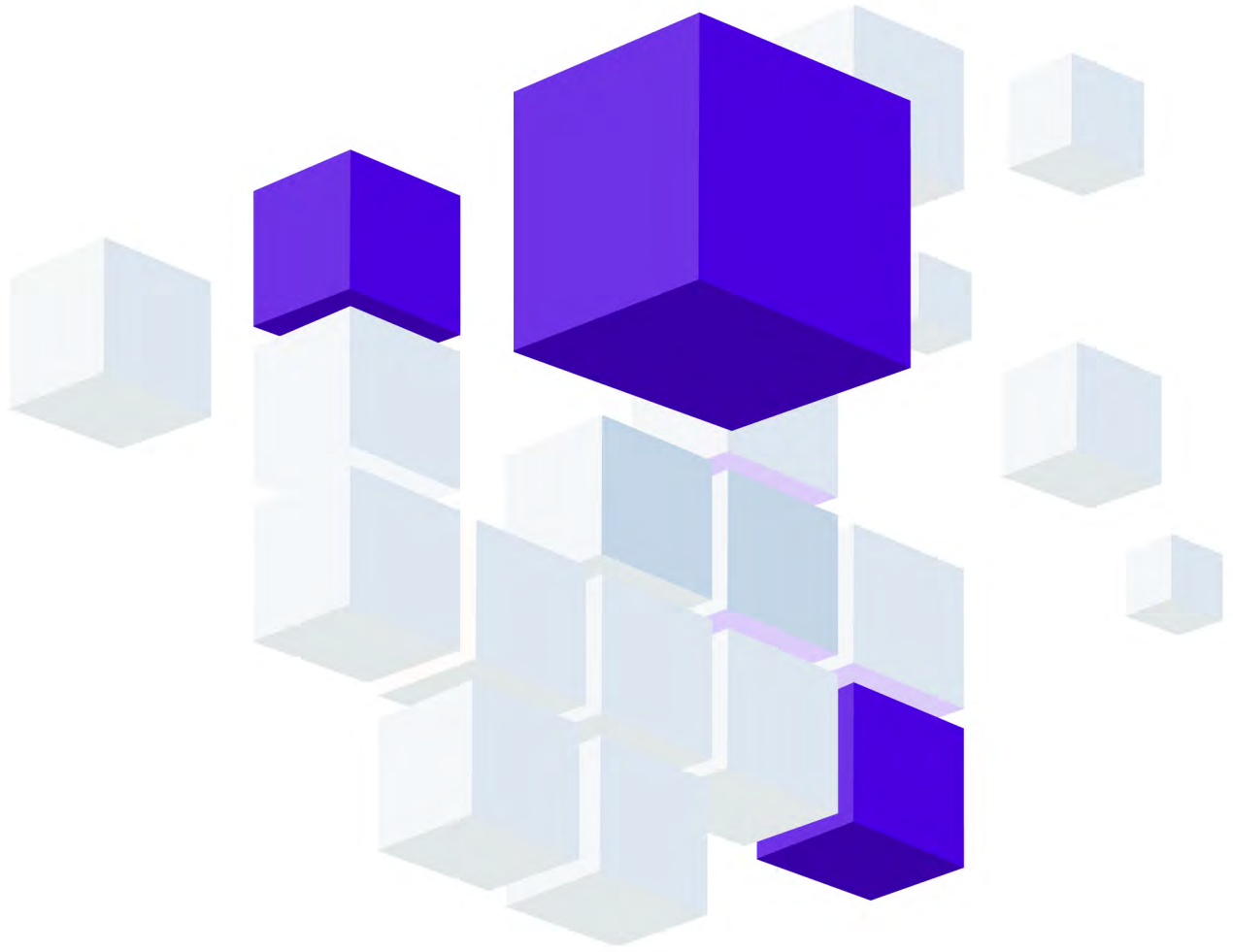
French | English



Management Report

English | French





Diversity and values



02
Tvo

ID-Values

The ID-Values (Tvo), *previously Organizational Values Test-Pyramid Format (OVT-PYR)*, is a tool used to assess the organizational and work values of an individual, a working group, or a company. This tool looks at the fit between an organization’s values and those of candidates or employees for selection or development purposes. This version assesses 34 organizational and work values.

 Target audience Any organization that wishes to favour a strategic orientation centred on the organizational values.		
 Time required Tvo: 45 minutes Tvo-B: 55 minutes	 Administration 4 Questions Ranking of values 40 Questions Multiple Choice	 Correction time Snapshot
 Languages available French English Spanish	 Standard Report English French Comparison Report English French	

05
Div

ID-Diversity

The ID-Diversity (Div), *previously Diversity Approach (TAFAD)*, is a tool that evaluates the comfort level of someone interacting with people who value different ways of doing things and have different work values. The test is a self-diagnostic tool and measures the participant’s openness to different cultural topics. It is based on a conceptual approach and has been standardized by professionals and managers from different backgrounds and cultures.

 Target audience Individuals and organizations wishing to undertake a reflection or development process on their approach to diversity.		
 Time required Div: 30 minutes Div-B: 45 minutes	 Administration Div: 100 Questions Multiple Choice Div-B: 127 Questions Multiple Choice	 Correction time Snapshot
 Languages available French English	 Standard Report English French	

06

Int

ID-Intercultural

The ID-Intercultural (Int), *previously Intercultural Effectiveness (IET)*, is a tool that assesses the extent to which people are willing to take on roles in a culture different from their own. The test is a self-diagnostic tool and identifies comfort and risk zones that must be considered when assessing the relevance of working outside one's country of origin. Cognitive, social, and emotional factors are assessed considering different cultures. The test is based on a conceptual approach and has been standardized by professionals and executives working abroad.

 Target audience People of different hierarchical levels who plan to work abroad or with members of a cultural community different from their own.	 Administration 230 questions Multiple Choice	 Correction time Snapshot
 Time required 1 hour	 Standard Report English French	
 Languages available French English		

09

VId

ID-Values/Dot

The ID-Values/Dot (VId), *previously Organizational Values Test-Pyramid Format- Version B (OVT-PYR-VB)*, is a tool used to assess the organizational and work values of an individual, a working group, or a company. This tool looks at the fit between an organization's values and those of candidates or employees for selection or development purposes. Compared to the ID-Values version, this variant evaluates only 34 organizational values, and does not evaluate work values.

 Target audience Any organization that wishes to favour a strategic orientation centred on organizational values.	 Administration 1 Question Ranking of values	 Correction time Snapshot
 Time required 25 minutes	 Standard Report English French	
 Languages available French English	Comparison Report English French	



Leadership








23

Ldr

ID-Leadership

The ID-Leadership (Ldr), *previously Leadership (LEAD-R)*, is an assessment tool designed to accurately measure key aspects of leadership related to recruitment, succession development, and coaching. This questionnaire, based on the most recent theories, evaluates the essential factors of leadership.






 Target audience Any person who plays or is seeking to play a management or mobilization role.	 Administration 100 Questions Multiple Choice 2 Questions Ranking	 Correction time Snapshot
 Time required 45 minutes	 Leadership Styles Report English French	 Competency Report English French
 Languages available French English Spanish		

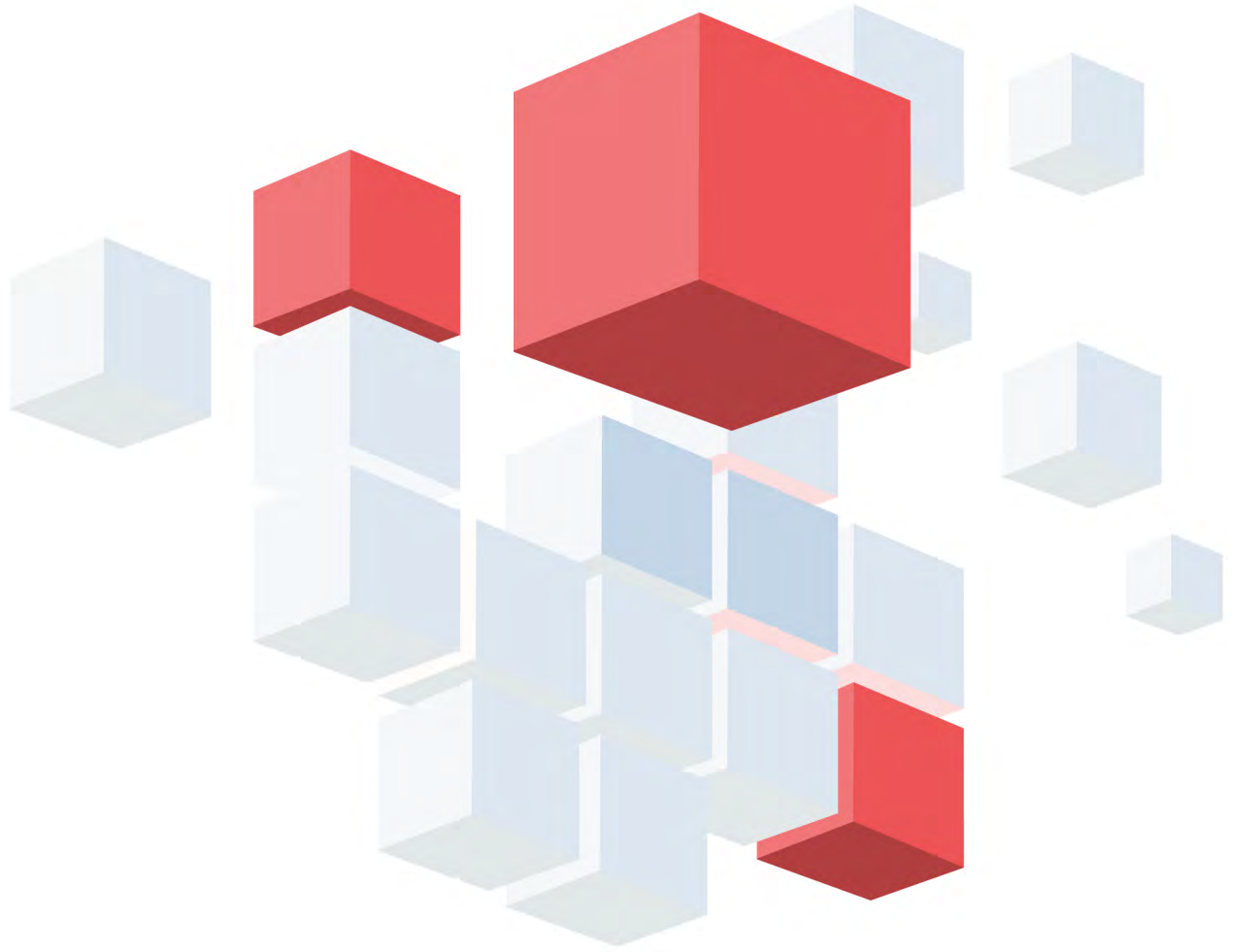
34

Ent

ID-Entrepreneurship

The ID-Entrepreneurship (Ent) is designed to assesses the key characteristics of entrepreneurs that distinguish themselves by their success in business. The test covers all the important aspects of entrepreneurship, i.e. the conditions for success, the ability to take risks, the motivation and interest in becoming an entrepreneur, the personal characteristics that are necessary to carry out such a project and the concrete intention to start a business.

 Target audience Anyone wishing to start or take over a business, or accompany entrepreneurs in this type of activity.	 Administration 103 questions Multiple Choice	 Correction time Snapshot
 Time required 20 minutes	 Standard Report English French	
 Languages available French English		



Interest and motivation









07

Tel

ID-Teleworking

The ID-Teleworking (Tel), *previously Interest in Telecommuting (TOTEM)*, is designed to assess the candidate's profile based on the characteristics of the environment generally associated with the well-being and productivity of people working from home. The report indicates how well a candidate's profile matches these characteristics.





 Target audience Any organization that wishes to assess a candidate's ability to work from home.	 Administration 84 Questions Multiple Choice	 Correction time Snapshot
 Time required 30 minutes	 Standard Report English French	
 Languages available French English		

08

Car

ID-Career

The ID-Career (Car), *previously Test 20/20 Career (20/20 Career)*, is a tool that allows participants to quickly identify their career interests and evaluate their degree of suitability (fit) for the desired position, taking into account their skills and personality. This assessment tool was specifically designed for people looking for job opportunities or seeking professional mobility. The test allows candidates to see where they stand in relation to more than 1,500 jobs listed by the main job dictionaries.

 Target audience Employees seeking career mobility, job seekers and students exploring different career options.	 Administration 226 Questions Multiple Choice	 Correction time Snapshot
 Time required 45 minutes	 Canada Report English French	
 Languages available French English		

12

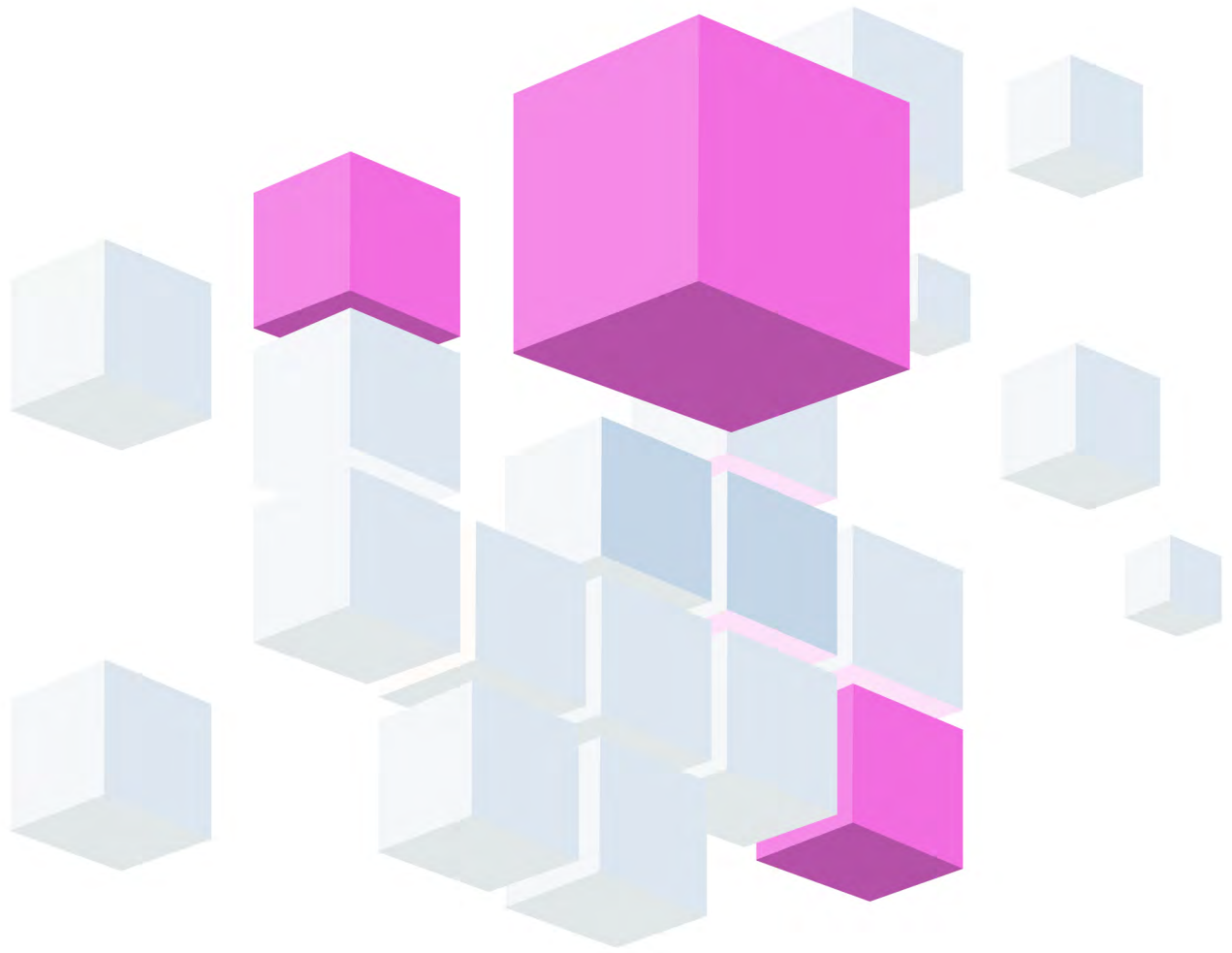
Ing

ID-Management Interest

The ID-Management Interest (Ing), *previously Interest in Management (IMT)*, is a tool assessing a person’s interest in management. This test was developed to provide people with a tool for reflecting on their career. It is also a reference tool for managers who wish to accompany their employees in a career development process based on their interests.

 Target audience A developing adult population with little or no management experience and wishing to measure their interest in this type of position.		
 Time required 15 minutes	 Administration 54 Questions Multiple Choice	 Correction time Snapshot
 Languages available French English	 Standard Report English French	





Office technology



11
Ppt

ID-PowerPoint







The ID-PowerPoint (Ppt), *previously Practical Exercise for Microsoft® PowerPoint (POWER-POINT-AT)*, is designed to assess a candidate's ability to perform general computer operations on the Microsoft® Office suite PowerPoint software. It provides an accurate overview of the person's mastery of these different functions.

 Target audience Any organization that wishes to assess a candidate's mastery of Microsoft® PowerPoint software general functions.	 Administration N.A.	 Correction time 3 to 5 business days
 Time required 30 minutes	 Standard Report English French	
 Languages available French English		

22
Exl

ID-Excel

The ID-Excel (Exl), *previously Practical Exercise for Microsoft® Excel (EXCEL-AT)*, provides a fair assessment of a candidate's ability to use the various functions and formulas of the Microsoft® Office Excel software.

 Target audience Any organization that wishes to assess how well an individual has mastered the functions of the Microsoft® Excel software.	 Administration N.A.	 Correction time 3 to 5 business days
 Time required Exl-Gen (General functions): 30 minutes Exl-Inter (Intermediate-level functions): 45 minutes	 Standard Report General functions English French Standard Report Intermediate functions English French	
 Languages available French English		

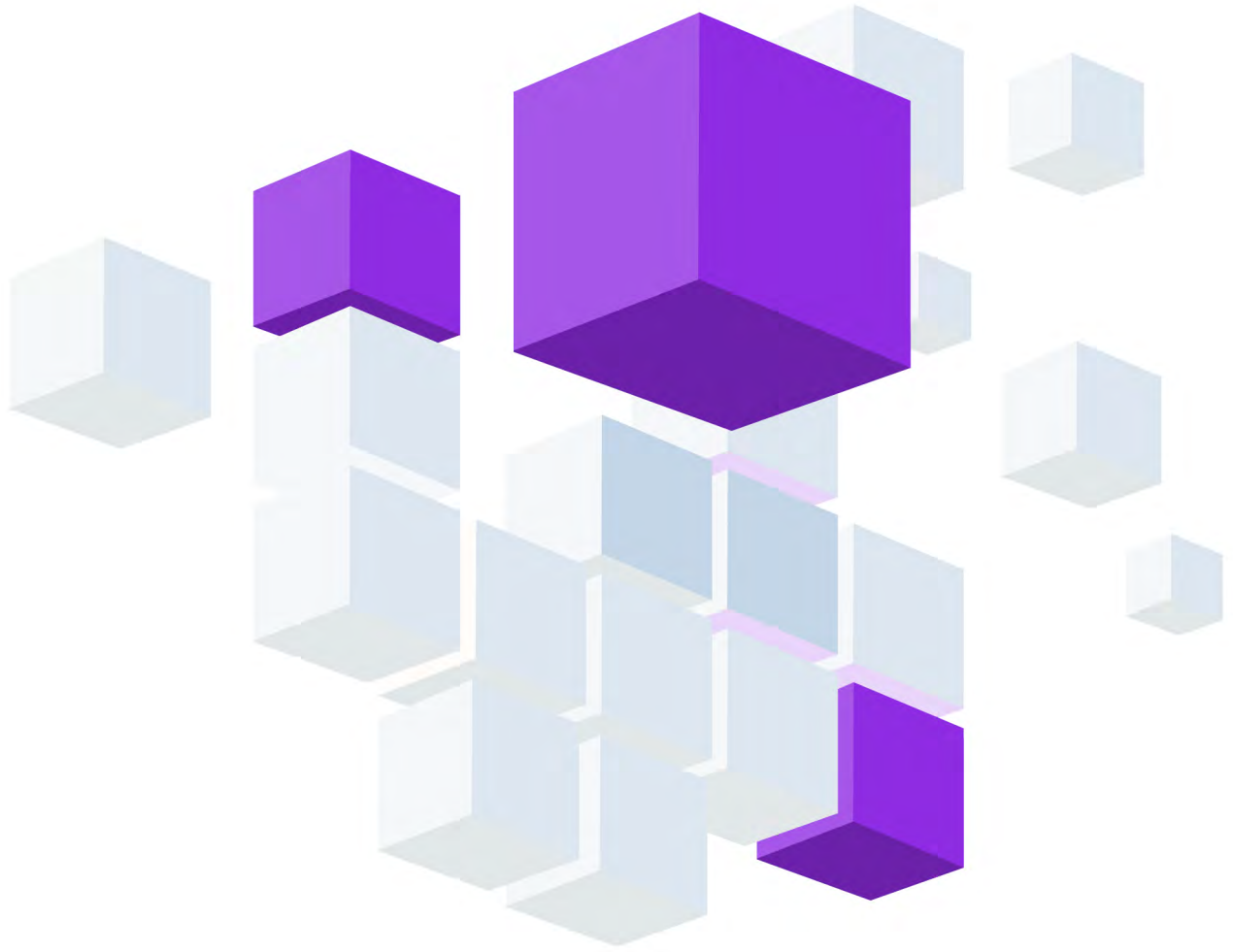


ID-Word

The ID-Word (Wrd), previously *Practical Exercise for Microsoft® Word (WORD-AT)*, is designed to provide a fair assessment of a candidate’s ability to use the various functions of the Microsoft® Office Word software.

 Target audience	Any organization that wishes to assess a candidate’s level of mastery of the functions of the Microsoft® Word software.	
 Time required	 Administration	 Correction time
Wrd-Gen (General functions): 30 minutes Wrd-Inter (Intermediate-level functions): 45 minutes	N.A.	3 to 5 business days
 Languages available	 Standard Report General functions	
French English	English French	
	Standard Report Intermediate functions	
	English French	





Cognitive and learning

24

Mat

ID-Mathematics

The ID-Mathematics (Mat), *previously Work Applied Mathematical Ability (MAT-AT)*, is an assessment tool that measures various cognitive skills associated with general intelligence. More specifically, it measures the ability to reason mathematically and to perform mental operations of a numerical nature. It provides an accurate assessment of an individual's ability to solve problems in a variety of situations.







 Target audience Positions at the specialized technician and professional levels that require good mathematical reasoning skills related to problem solving.		
 Time required 45 minutes	 Administration 14 Questions Multiple Choice	 Correction time Snapshot
 Languages available French English	 Standard Report English French	

25

Trp

ID-Problem Solving

The ID-Problem Solving (Trp), *previously Problem Resolution Test (PRT)*, is an assessment tool that measures various cognitive skills associated with general intelligence. It allows for a more precise measurement of the ability to analyze and solve problems using a logical or deductive reasoning approach. In particular, it uses several cognitive learning and adaptive skills that require a strong ability to analyze and draw accurate conclusions about different types of problems.

 Target audience Professionals, supervisors and managers who require the ability to analyze and solve different types of problems.		
 Time required 1 hour and 15 minutes	 Administration 22 Questions Multiple Choice	 Correction time Snapshot
 Languages available French English	 Standard Report English French	

26

Mec

ID-Mechanic

The ID-Mechanic (Mec), *previously Mechanical Abilities Test (MEC-AT)*, is a tool that assesses the cognitive capacity and the technical and professional skills of candidates working in this field, i.e. their mechanical reasoning abilities as well as their ability to learn mechanical processes and related tasks. The test also measures an individual's ability to visualize and understand the relationship between various basic mechanical and spatial aspects.







 Target audience Labourers and technicians requiring the ability to perform mechanical repairs and apply mechanical concepts.		
 Time required 25 minutes	 Administration 25 Questions Multiple Choice	 Correction time Snapshot
 Languages available French English Spanish	 Standard Report English French	

27

Lrn

ID-Learning Agility

The ID-Learning Agility (Lrn), *previously Learning Test (Learning)*, is a questionnaire on learning styles. This tool was designed to help participants learn more about how they approach learning activities. It takes into account both developmental activity preferences and personal learning style. Its report also suggests avenues for reflection aimed at maximizing the efforts invested in personal development.

 Target audience People who want to learn how to maximize their learning and personal development.		
 Time required 15 minutes	 Administration 42 Questions Multiple Choice	 Correction time Snapshot
 Languages available French English	 Standard Report English French	

28

Rec

ID-Recommandations

The ID-Recommandations (Rec), *previously Ability to Analyze and Formulate Written Recommendations Exercise (TH-AFRE)*, is a tool that assesses cognitive ability, specifically the ability to perform an analysis and make written recommendations. Special attention is also given to spelling, grammar, syntax and punctuation.

 <p>Target audience Mid-level professional positions that require good analytical skills and a good ability to transmit information.</p>	 <p>Time required 3 hours</p>	 <p>Administration 1 Question Development</p>	 <p>Correction time 3 to 5 business days</p>
 <p>Languages available French English</p>	 <p>Standard Report English French</p>		

35

Cid

ID-Cognitive/Industrial

The ID-Cognitive/Industrial (Cid), *previously Work Applied Cognitive Ability Test, Industrial Version (WAC-AT-IND)*, is an assessment tool that measures various cognitive skills associated with general intelligence. More specifically, it measures the ability to reason logically and to perform mental operations of a verbal, numerical, and spatial nature. This tool includes more questions on spatial skills than the ID-Cognitive test.







 <p>Target audience Specialized labourers, operators, and technicians who need the ability to reason verbally, numerically, and spatially.</p>	 <p>Time required 50 minutes</p>	 <p>Administration 50 Questions Multiple Choice</p>	 <p>Correction time Snapshot</p>
 <p>Languages available French English</p>	 <p>Standard Report English French</p>		

36

Cog

ID-Cognitive

The ID-Cognitive (Cog), *previously Work Applied Cognitive Ability Test (WAC-AT)*, is an assessment tool that measures various cognitive skills associated with general intelligence. More specifically, it measures the ability to reason logically and the ability to perform mental operations of a verbal, numerical and spatial nature.







<p> Target audience Positions at various levels that require good verbal, numerical and spatial reasoning skills.</p>		
<p> Time required Cog-B: 25 minutes Cog: 50 minutes</p>	<p> Administration Cog-B: 25 Questions Multiple Choice Cog: 50 Questions Multiple Choice</p>	<p> Correction time Snapshot</p>
<p> Languages available French English Spanish</p>	<p> Standard Report English French Spanish</p>	

37

Cat

ID-Cognitive/Adaptive

The ID-Cognitive/Adaptive (Cat), *previously Adaptive Cognitive Test (ACT)*, is an assessment tool in the form of a Computer Adaptive (CAT), i.e. a method of administration that allows questions to be selected based on the level of success in previous answers. This test measures cognitive ability, i.e. the ability to perform mental operations of a non-verbal nature.







<p> Target audience Positions at various levels that require the ability to reason logically and sequentially and to make decisions.</p>		
<p> Time required 2 minutes and 30 seconds per question</p>	<p> Administration 8 Questions 1 Part 150 Questions Multiple Choice Question Bank</p>	<p> Correction time Snapshot</p>
<p> Languages available French English</p>	<p> Standard Report English French</p>	

38

Log

ID-Logic

The ID-Logic (Log), *previously Work Applied Logical Reasoning Test (TH-LOG)*, is an evaluation tool that measures various cognitive skills associated with general intelligence. It measures the ability to use deductive logical reasoning. It provides a fair assessment of an individual's ability to solve problems in various situations.




-  **Target audience**
Any organization wishing to assess a candidate's ability to reason logically in professional-type positions.
-  **Time required**
1 hour and 20 minutes
-  **Administration**
20 Questions | Multiple Choice
-  **Correction time**
Snapshot
-  **Languages available**
French | English
-  **Standardized Report**
English | French

39

Spa

ID-Spatial

The ID-Spatial (Spa), *previously Spatial Reasoning Test (SPATIAL-AT)*, is an assessment tool that assesses various cognitive skills associated with general intelligence. More specifically, it measures the ability to perform mental operations involving spatial manipulation. The test questions are specifically related to spatial perception, which is the ability to understand how things are organized in space.

-  **Target audience**
Positions such as labourers, workers, and professionals for whom spatial perception is important.
-  **Time required**
30 minutes
-  **Administration**
25 Questions | Multiple Choice
-  **Correction time**
Snapshot
-  **Languages available**
French | English
-  **Standard Report**
English | French

Ana

ID-Analysis

The ID-Analysis (Ana) is a tool that assesses cognitive ability, specifically the ability to perform an analysis, provide written recommendations, and assess the impact of the recommendations. Special attention is also given to spelling, grammar, syntax and punctuation.

 <p>Target audience Senior professional positions such as analysts, who are required to have a very high level of analytical ability.</p>	 <p>Administration 1 Question Development</p>	 <p>Correction time 3 to 5 business days</p>
 <p>Time required 2 hours and 30 minutes</p>	 <p>Standard Report English French</p>	
 <p>Languages available French English</p>		





Situational Judgment Professional



10

Spr

ID-Sports

The ID-Sports (Spr), *previously General Profiler for Sports (GPS)*, assesses different psychological skills required for an elite level athlete to perform optimally in the sport they practise. The ID-Sports test was developed for both individual and team sports. It can be administered for an individual evaluation, for athlete recruitment or draft, to establish a team profile, or to assess whether a player is a good fit for the team.



Target audience

All professional or semi-professional teams or athletes, as well as all teams or individuals playing at a competitive level.



Time required

50 minutes



Administration

84 Questions | Multiple Choice



Correction time

Snapshot



Languages available

French | English



Standard Report

English | French

20

Grh

ID-Human Resources

The ID-Human Resources (Grh), *previously Situational Judgment Test for Human Resources Management Advisors (HRMA-SJT)*, is a tool that assesses the ability to react adequately to situations likely to be encountered in a human resources management position. Through situations representative of the tasks carried out by a human resources consultant, the exercise makes it possible to measure essential criteria for working in this type of position.



Target audience

Any organization wishing to evaluate candidates for human resources consultant positions.



Time required

2 hours and 30 minutes



Administration

35 Questions | Multiple Choice



Correction time

Snapshot



Languages available

French | English



Standard Report

English | French



Situational Judgment Administrative

14
Adm

ID-Administrative



The ID-Administrative (Adm), *previously Objective Exercise for Personnel in Administrative Functions (OEPAF)*, is a skills test that includes simulations representing daily tasks performed in an administrative support context. During these simulations, the candidate must establish priorities, enter data, verify administrative forms, and transmit information.

 Target audience Any organization wishing to assess the competencies associated with an administrative support position.	 Administration 20 questions Multiple Choice	 Correction time Snapshot
 Time required 45 minutes	 Standard Report English French Health sector report - admin functions French	
 Languages available French English		

15
Jad

ID-Administrative Judgment

The ID-Administrative Judgment (Jad), *previously Situational Judgement Test on Administrative Skills (SJT-AS)*, is a tool designed to help employers select employees to perform various tasks associated with administrative positions. This test includes simulations that are representative of daily tasks performed in an administrative support context. During these simulations, the candidate must establish priorities, coordinate activities, revise work schedules, and control the quality of the tasks performed, all in accordance with the rules and procedures provided.

 Target audience Any organization wishing to assess candidates for an administrative support position.	 Administration 22 Questions Multiple Choice	 Correction time Snapshot
 Time required 1 hour	 Standard Report English French	
 Languages available French English		

16

Alp

ID-Alphanumerical

The ID-Alphanumerical (Alp), *previously Alphanumerical Data Entry Test (ANDET)*, is a tool designed to measure how many numbers and letters the candidate can accurately enter during a timed period. It provides a fair assessment of an individual's ability to enter a large amount of data without error.







 Target audience Any organization where staff must accurately enter alphanumeric data.	 Administration 30 Questions Development	 Correction time Snapshot
 Time required 18 minutes	 Standard Report English French Health sector report - admin functions French	
 Languages available French English		

17

Num

ID-Numerical

The ID-Numerical (Num), *previously Numerical Data Entry Test (NUMDET)*, is a tool that assesses how many digits the candidate can accurately enter during a timed period. It provides a fair assessment of the ability to enter a large amount of data without error.

 Target audience Any organization where staff must enter numerical data.	 Administration 30 Questions Development	 Correction time Snapshot
 Time required 18 minutes	 Standard Report English French	
 Languages available French English		

18
Dac

ID-Typing

The ID-Typing (Dac), *previously Typing Test (TYPING-AT)*, is a tool that assesses how many characters the candidate can enter during a timed period. It provides a fair assessment of a person’s ability to enter a large number of characters without error. The report includes various statistical results concerning the candidate’s typing skills, including the number of errors, the accuracy percentage, and the number of words typed per minute.

 Target audience Any organization where staff are required to enter data or perform typing tasks.		
 Time required 18 minutes	 Administration 6 Questions Development	 Correction time Snapshot
 Languages available French English	 Standard Report English French	

44
Pmc

ID-Project Management Clerk

The ID-Project Management Clerk (Pmc), *previously Situational Judgement Test - Project Management Clerk (SJT-PMC)*, is a tool that measures the general competencies associated with the good performance of a project management clerk. This test uses role-playing scenarios to assess the essential abilities and behaviours for several jobs that require project management skills.

 Target audience Any organization wishing to evaluate candidates for positions requiring project management skills.		
 Time required 45 minutes	 Administration 55 Questions Multiple Choice	 Correction time Snapshot
 Languages available French	 Standard Report French	

19

Ver

ID-Verification

The ID-Verification (Ver), *previously Data Verification and Classification Test (VERIF-AT)*, is a tool designed to assess the candidate’s ability to find data transcription errors in various documents and to perform data filing during a timed period.

 Target audience	Any organization wishing to assess the competencies associated with an administrative support position.	
 Time required 18 minutes	 Administration 21 Questions Multiple Choice	 Correction time Snapshot
 Languages available French English	 Standard Report English French	





Situational Judgment

Sales and Customer Service

21

T3c

ID-Call Center

The ID-Call Center (T3c), *previously Client Contact Center Test—Client Service (T3CCLIENT)*, is a tool that assesses essential competencies related to tasks performed by call centre employees. It is used to evaluate the competencies associated with customer service activities. This test is offered in different versions, allowing the test user to evaluate the behaviors likely to be encountered when interacting with customers in a sales, collection, or customer service context.

<p> Target audience Any organization that wishes to assess customer service competencies of staff working in customer contact centers.</p>		
<p> Time required Between 50 and 75 minutes, depending on the test version.</p>	<p> Administration 62-98 Questions Multiple Choice 19 Questions Ranking</p>	<p> Correction time Snapshot</p>
<p> Languages available French English</p>	<p> Standard Report English French Skills development staffing report English French</p>	

29

Cli

ID-Client Service

The ID-Client Service (Cli), *previously Client Services Test (CLIENT-AT)*, is a tool that assesses a candidate's ability to respond appropriately to different situations that may occur in a client-employee relationship. This assessment exercise is specifically designed to fill positions in which customer service plays an important role. The questions are based on short role-playing situations that may be encountered during interactions with a customer.







<p> Target audience Any organization that wishes to evaluate customer service competencies for positions related to client-services.</p>		
<p> Time required 1 hour and 30 minutes</p>	<p> Administration 40 Questions Multiple Choice</p>	<p> Correction time Snapshot</p>
<p> Languages available French English</p>	<p> Standard Report English French</p>	

30

Clu

ID-User Service

The ID-User Service (Clu), *previously User Services Test (TH-USR)*, is a tool that assesses a candidate's ability to respond appropriately to various scenarios related to the delivery of services to users. This assessment exercise is specifically designed to fill positions in which customer service plays an important role. The questions are based on short role-play scenarios that may occur during interactions with a user.

 Target audience Any organization that wishes to evaluate competencies related to user service.	 Administration 28 Questions Multiple Choice	 Correction time Snapshot
 Time required 1 hour	 Standard Report English French	
 Languages available French English		

31

Vpr

ID-Sales/Pro

The ID-Sales/Pro (Vpr), *previously Sales-Pro Test (SALES-PRO)*, is a tool that measures the elements essential to the accomplishment of tasks by professionals working in the sales sector. It evaluates the ability to react adequately to situations in a sales context. Each question consists of a short scenario likely to occur in a sales context.

 Target audience Sales, consultant, and account manager positions, or any other position where sales play an important role.	 Administration 82 Questions Multiple Choice	 Correction time Snapshot
 Time required 1 hour and 15 minutes	 Standard Report English French	
 Languages available French English		

40

Vnt

ID-Sales

The ID-Sales (Vnt), *previously Sales Skills Test (SALESSKILLS-AT)*, is a tool to assess the sales potential of candidates by evaluating the skills and essential competencies of a successful salesperson. This test allows organizations to identify individuals who possess the skills required to deal with an increasingly demanding clientele.

 Target audience Sales professionals in direct contact with customers and involved in the various stages of the sales cycle.	 Administration 100 Questions Multiple Choice	 Correction time Snapshot
 Time required 1 hour	 Standard Report English French	
 Languages available French English		

41

Vcm

ID-Sales/Commercial

The ID-Sales/Commercial (Vcm), *previously Sales Skills Test—Commercial Sales (SALES-SKILLS-AT-CS)*, is a tool that allows companies to identify the best retail salespeople. The report was designed to present the competencies or development potential related to short-cycle sales and oriented towards reaching immediate results.

 Target audience Any organization that wants to evaluate the sales potential of people in a position where sales are important.	 Administration 100 Questions Multiple Choice	 Correction time Snapshot
 Time required 1 hour	 Standard Report English French	
 Languages available French English		

ID-Client Reception

The ID-Client Reception (Cla), *previously Reception and Client Service Test (TASAC)*, is a tool that assesses the essential elements related to tasks performed by people working in the reception and customer service sector.



Target audience

Any organization wishing to assess competencies related to client reception and customer service.



Time required

50 minutes



Administration

79 Questions | Multiple Choice



Correction time

Snapshot



Languages available

French | English



Standard Report

English | French



Situational Judgment Trade



43

Jls

ID-Recreational

The ID-Recreational (Jls), *previously Situational Judgment Test for Personnel in the Leisure Sector (SJT-LEISURE)*, is a tool that assesses the essential skills required to perform duties for a wide range of casual positions in the recreation sector.



Target audience

Any organization wishing to assess candidates for positions in the recreation sector.



Time required

25 minutes



Administration

30 Questions | Multiple Choice



Correction time

Snapshot



Languages available

French | English



Standard Report

English | French

32

Jpl

ID-First Line

The ID-First Line (Jpl), *previously Situational Judgement Test—Front Line (SJT-FRONT)*, is a tool that measures the general competencies associated with good performance of front-line staff. This test assesses essential abilities and behaviours in several jobs through role-playing scenarios.



Target audience

Any organization that wishes to evaluate the competencies related to front-line service.



Time required

30 minutes



Administration

48 Questions | Multiple Choice



Correction time

Snapshot



Languages available

French | English



Standard Report

English | French



Situational Judgment Management

45

Gci

ID-Management/Staff Operations

The ID-Management/Staff Operations (Gci), *previously National Society of Ocean Energy In-Basket Exercise (NSOE-IB)*, is used to assess the ability to react to management situations likely to be encountered in the context of a middle management position evolving in an administrative context.



Target audience

Middle managers working in an administrative context and responsible for the internal customer assistance sector.



Time required

1 hour and 30 minutes



Administration

70 Questions | Multiple Choice



Correction time

Snapshot



Languages available

French | English



Standard Report

English | French

46

Gsc

ID-Supervision/Line Operations

The ID-Supervision/Line Operations (Gsc), *previously Holo-Com Corporation In-Basket Exercise (HCC-IB)*, is a tool that assesses the ability to react appropriately to various management situations that may be encountered in the context of a first-level management position evolving in an operation and sales context.



Target audience

First-level management positions who work in an operational context and are responsible for the operations and sales sector.



Time required

Gsc-B: 45 minutes

Gsc: 1 hour and 30 minutes

minutes



Administration

Gsc-B : 36 Questions | Multiple Choice

Gsc: 71 Questions | Multiple Choice



Correction time

Snapshot



Languages available

French | English



Standard Report

English | French

47

Gsi

ID-Supervision/Staff Operations

The ID-Supervision/Staff Operations (Gsi), *previously National Renewable Energies Corporation In-Basket Exercise (NREC-IB)*, assesses the ability to react to management situations likely to be encountered in the context of a first-level management position evolving in an administrative context.



Target audience

First-level managers who work in an administrative context and are responsible for the internal customer assistance sector.



Time required

1 hour and 30 minutes



Administration

70 Questions | Multiple Choice



Correction time

Snapshot



Languages available

French | English



Standard Report

English | French

48

Gcc

ID-Management/Line Operations

The ID-Management/Line Operations (Gcc), *previously Veranium Corporation In-Basket Exercise (VCI-IB)*, is used to assess the ability to react to management situations likely to be encountered in the context of a middle management position evolving in an operation and sales context.



Target audience

Middle managers who work in an operational context and are responsible for the sales operations sector.



Time required

Gcc-B: 45 minutes
Gcc: 1 hour and 30 minutes



Administration

Gcc-B: 35 Questions | Multiple Choice
Gcc: 69 Questions | Multiple Choice



Correction time

Snapshot



Languages available

French | English



Standard Report

English | French

49

Gse

ID-Supervision/Written

The ID-Supervision/Written (Gse), *previously Pro-Fest Ability Exercise (PROFEST-AT)*, is a tool designed to assess the ability to respond appropriately, in writing, to work situations encountered in a first-level supervisory position. These situations include requests from direct supervisors, letters from external stakeholders, memos, and requests from employees.

 Target audience Any organization wishing to assess candidates for first-level supervisory positions.	 Administration 7 Questions Development	 Correction time 3 to 5 business days
 Time required 2 hours	 Standard Report English French	
 Languages available French English		

50

Gce

ID-Management/Written

The ID-Management/Written (Gce), *previously Business Options In-Basket Exercise (BUSINESS-IB)*, is a tool designed to assess the ability to respond adequately, in writing, to work situations encountered in a management context. These situations include letters, memos, and short reports on topics such as the fiscal year and human resources management.

 Target audience Any organization wishing to assess candidates for middle management positions.	 Administration 12 Questions Development	 Correction time 3 to 5 business days
 Time required 3 hours	 Standard Report English French	
 Languages available French English		

51

Gst

ID-Management/Strategic

The ID-Management/Strategic (Gst), *previously Strategic Planning Exercise (EPS)*, is a tool that assesses an individual's ability to understand an organization's internal and external environment in order to establish strategic directions and propose an action plan to solve problems in the short, medium and long term. This test is also designed to assess a person's ability to consider a large amount of information and data presented in different formats such as reports, memos, letters, survey results, etc.

 Target audience Any organization wishing to assess candidates for senior management positions.		
 Time required Gst-B: 1 hour and 30 minutes Gst: 3 heures	 Administration 1 Question Development	 Correction time 3 to 5 business days
 Languages available French English	 Quantitative Report English French Qualitative Report English French	

52

Gqe

ID-Team Lead/Written

The ID-Team Lead/Written (Gqe), *previously Advantage Points In-Basket (ADVANTAGE-IB)*, is a tool designed to assess the ability to respond adequately, in writing, to situations likely to be encountered in an operations management position. These situations may include letters from outside the organization, memos from a superior, an employee, or a colleague, and short reports on topics such as budget, sales, or customer service.

 Target audience Any organization wishing to assess candidates for middle management positions in operations.		
 Time required 2 hours and 30 minutes	 Administration 7 Questions Development	 Correction time 3 to 5 business days
 Languages available French English	 Standard Report English French	

65

Gcd

ID-Management/Line Operations-Dev

The ID-Management/Line Operations-Dev (Gcd) is a development tool that assesses a candidate's strengths and challenges when called upon to respond to situations that may be encountered on the job in a middle management position in an operations and sales context.



Target audience

Any person who aspires to hold a middle management position (director, manager, head of department, etc.) in an operational context, responsible for the operations and sales sector.



Time required

45 minutes



Administration

35 Questions | Multiple Choice



Correction time

Snapshot



Languages available

French | English



Standard Report

French | English

66

Gsd

ID-Supervision/Line Operations-Dev

The ID-Supervision/Line Operations-Dev (Gsd) is a development tool that assesses a candidate's strengths and challenges when called upon to respond to situations that may be encountered in a supervisory or entry-level management position in an operations and sales context.



Target audience

Any person who aspires to hold a first-level management position (team leader, supervisor, coordinator, etc.) in an operational context, responsible for the operations and sales sector.



Time required

45 minutes



Administration

36 Questions | Multiple Choice



Correction time

Snapshot



Languages available

French | English



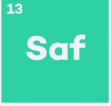
Standard Report

French | English







Occupational health and safety





ID-Safety

The ID-Safety (Saf), *previously Safety Assessment for Employees (SAFE-T)*, is an inventory tool that measures the factors contributing to safe behaviours in your organization. This questionnaire is based on scientific studies and allows you to evaluate the four fundamental factors for safe behaviour: attitude, motivation, perceptions of the importance of safety, and personal characteristics. It can be used in an organizational development or recruitment context.

 Target audience Anyone operating in an environment requiring safe behaviour.	 Administration 104 Questions Multiple Choice 2-4 Questions Ranking	 Correction time Snapshot
 Time required 30 minutes	 Languages available French English Spanish	 Standard Report - Saf English French Spanish Standard Report - Saf-B English French





Languages and communication



53

Ftr

ID-French Applied/Pro

The ID-French Applied/Pro (Ftr), *previously Work Applied French Test (WAFT)*, is a tool that assesses a person's written French proficiency level. The questions relate to elements of French that are likely to be encountered in the workplace. This version takes grammar reform into account.



Target audience

Any organization wishing to assess a candidate's French language skills.



Time required

Between 30 minutes and 1 hour and 30 minutes, depending on the test version.



Administration

Between 30 and 80 questions | Multiple choice



Correction time

Snapshot



Languages available

French



Standard Report

English | French

55

Efa

ID-Written French/Adm

The ID-Written French/Adm (Efa), *previously French Written Communication Exercise for Admin Support Staff (WCE-ADM-FR)*, is a tool that assesses a person's ability to communicate in writing using the French language in a work context specific to administrative correspondence. This test evaluates a candidate's ability to express ideas in writing, in French, using appropriate and error-free language to convey information effectively.



Target audience

Any organization wishing to assess French writing skills for administrative support positions.



Time required

45 minutes



Administration

1 Question | Development



Correction time

3 to 5 business days



Languages available

French



Standard Report

English | French

54

Eea

ID-Written English/Adm

The ID-Written English/Adm (Eea), *previously English Written Communication Exercise for Admin Support Staff (WCE-ADM-EN)*, is a tool that assesses a person’s ability to communicate in writing using the English language in the context of administrative correspondence. This test evaluates a candidate’s ability to express ideas in writing, in English, using appropriate and error-free language to convey information effectively.




 Target audience Any organization wishing to assess English writing skills for administrative support positions.	 Administration 1 Question Development	 Correction time 3 to 5 business days
 Time required 45 minutes	 Standard Report English French	
 Languages available English		

57

Eep

ID-Written English/Pro

The ID-Written English/Pro (Eep), *previously English Written Communication Exercise for Professionals (WCE-PRO-EN)*, is a tool that assesses a person’s ability to communicate in writing using the English language in a work context specific to jobs of a professional nature. This test assesses a candidate’s ability to express ideas in writing, in English, using appropriate and error-free language to convey information effectively.

 Target audience Any organization wishing to assess writing skills in English for professional positions.	 Administration 1 Question Development	 Correction time 3 to 5 business days
 Time required 1 hour	 Standard Report English French	
 Languages available English		

60

Een

ID-Written English

The ID-Written English (Een), *previously English Written Communication Exercise (WCE-AN)*, is a tool that assesses a person's ability to communicate in writing in English. This test assesses a candidate's ability to express ideas in writing using appropriate and error-free language to convey information effectively.



Target audience

Any organization wishing to assess English writing skills.



Time required

30 minutes



Administration

1 Question | Development



Correction time

3 to 5 business days



Languages available

English



Standard Report

English | French

56

Ebi

ID-Written Bilingual

The ID-Written Bilingual (Ebi), *previously Bilingual Written Communication Exercise (WCE-BIL-FR-AN)*, is a tool that assesses a person's ability to convey information effectively in writing, in both English and French, using appropriate and error-free language.



Target audience

Positions where bilingual written communication is important.



Time required

1 hour and
30 minutes



Administration

4 Questions | Development



Correction time

3 to 5 business days



Languages available

French | English



Standard Report

English | French

58

Efp

ID-Written French/Pro

The ID-Written French/Pro (Efp), *previously French Written Communication Exercise for Professionals (WCE-PRO-FR)*, is a tool that assesses a person’s ability to communicate in writing using the French language in a work context specific to professional jobs. This test assesses the extent to which a candidate is able to express ideas in writing using appropriate and error-free language to convey information effectively.

 Target audience Any organization wishing to evaluate French writing skills for professional positions.	 Administration 1 Question Development	 Correction time 3 to 5 business days
 Time required 1 hour	 Standard Report English French	
 Languages available French		

59

Eca

ID-Written/Call Center

The ID-Written/Call Center (Eca), *previously French Written Communication Exercise for Call Center Agents (WCE-FR-PREP)*, is a tool that assesses a person’s ability to communicate in writing using the French language in a work context specific to jobs of this nature. This test assesses the extent to which a candidate is able to express ideas in writing using appropriate and error-free language to convey information effectively.

 Target audience Any organization wishing to evaluate a candidate working in a call centre where French writing skills are required.	 Administration 4 Questions Development	 Correction time 3 to 5 business days
 Time required 30 minutes	 Standard Report French	
 Languages available French		

61

Efr

ID-Written French

The ID-Written French (Efr), *previously French Written Communication Exercise (WCE-FR)*, is a tool that assesses a person’s ability to communicate in writing in French. This test assesses a candidate’s ability to express ideas in writing using appropriate and error-free language to convey information effectively.

<p> Target audience Any organization wishing to assess French writing skills.</p>		
<p> Time required 1 hour</p>	<p> Administration 1 Question Development</p>	<p> Correction time 3 to 5 business days</p>
<p> Languages available French</p>	<p> Standard Report English French</p>	

62

Ofr

ID-Oral French

The ID-Oral French (Ofr), *previously French Oral Communication Test (OCT-FR)*, is a tool that measures how effectively a person can communicate orally in French. The themes and questions of the ID-Oral French test are designed to assess the candidates’ comprehension and oral expression skills in terms of vocabulary, verbs, syntax, rhythm, logic, and register.

<p> Target audience All positions in an organization that requires the ability to communicate orally, in French, with various stakeholders.</p>		
<p> Time required 30 minutes</p>	<p> Administration 15 questions Development</p>	<p> Correction time 1 business day</p>
<p> Languages available French</p>	<p> Standard Report English French</p>	

ID-Oral English

The ID-Oral English (Oen), *previously English Oral Communication Test (OCT-EN)*, is a tool that measures how effectively a person can communicate orally in English. The themes and questions of the ID-Oral English test are designed to assess the candidates' comprehension and oral expression skills in terms of vocabulary, verbs, syntax, rhythm, logic, and register.



Target audience

All positions in an organization that requires the ability to communicate orally, in English, with various stakeholders.



Time required

30 minutes



Administration

15 questions | Development



Correction time

1 business day



Languages available

English



Standard Report

English | French

